

CAT® 950H WHEEL LOADERS TRANSMISSION REPAIR OPTIONS



LET'S DO THE WORK.™

WHY CHOOSE GMMCO FOR REPAIR OPTION

Every repair situation has its own unique set of challenges. Gmmco offers several options for repair components of your machine.

Timely identification of problem will help you to repair the component before failure. It will minimise your operating cost, improve productivity and profitability.

Our Caterpillar trained experts help you to do repair before failure and choose various options available for repair for saving time and money.

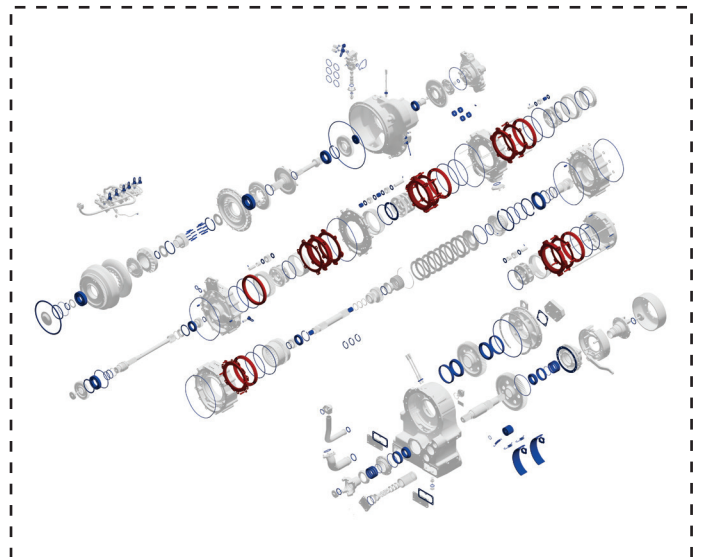
KEY BENEFITS

- Save repair cost 25% to 30%
- Reduced production loss
- Increased machine availability
- Composite warranty for repaired assembly

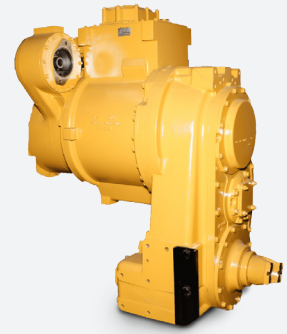
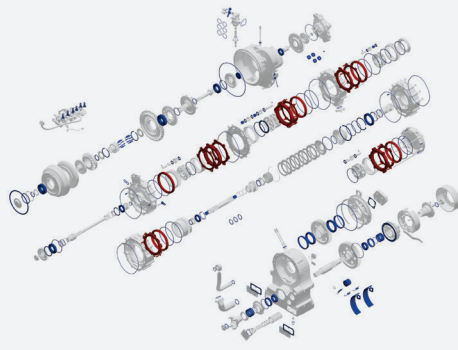
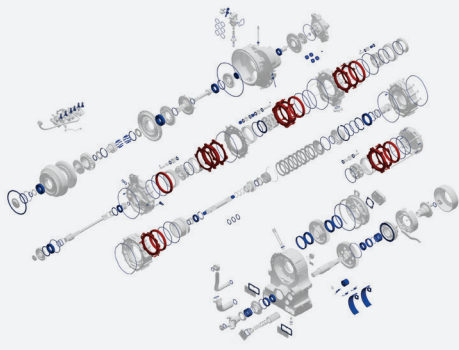
REPAIR INDICATORS

Transmission requires immediate Diagnosis and Repair if below indications are observed

- Loss of power & not taking load
- Gear slippage & overheating
- Metal particle found in oil
- Abnormal schedule oil sample report



Transmission Repair Options



Level 1

Minor Repair at Site

Job Scope:

- Inspect replace clutch disc, if necessary
- Replace seals
- Replace thrust washers
- Check and adjust pressure
- Check pressure and adjust to specification
- Perform PM 500 service
- Perform testing on machine

Level 2

Major Repair at Workshop

Job Scope:

- Inspect clutch disc and plates as per re-usability guidelines, replace, if necessary
- Replace thrust washer, planetary bearing and bushings
- Replace seals & gaskets
- Inspect planetary gears & shafts, replace if necessary
- Inspect transfer gear bearing, replace if necessary
- Repair control valve
- Testing and pressure adjustment
- Painting

Level 3

Cat® New Transmission

Job Scope:

- Replace with new Cat Transmission

TRUSTED COMPANION FOR YOUR SUCCESS

Gmmco Limited

CK Birla Group

No 6, G.S.T. Road, St. Thomas Mount, Chennai - 600 016.

Toll-Free No: 1800 425 2546 | E-mail: sales@gmmcoindia.com | Web: www.gmmco.in



Gmmco

CAT